

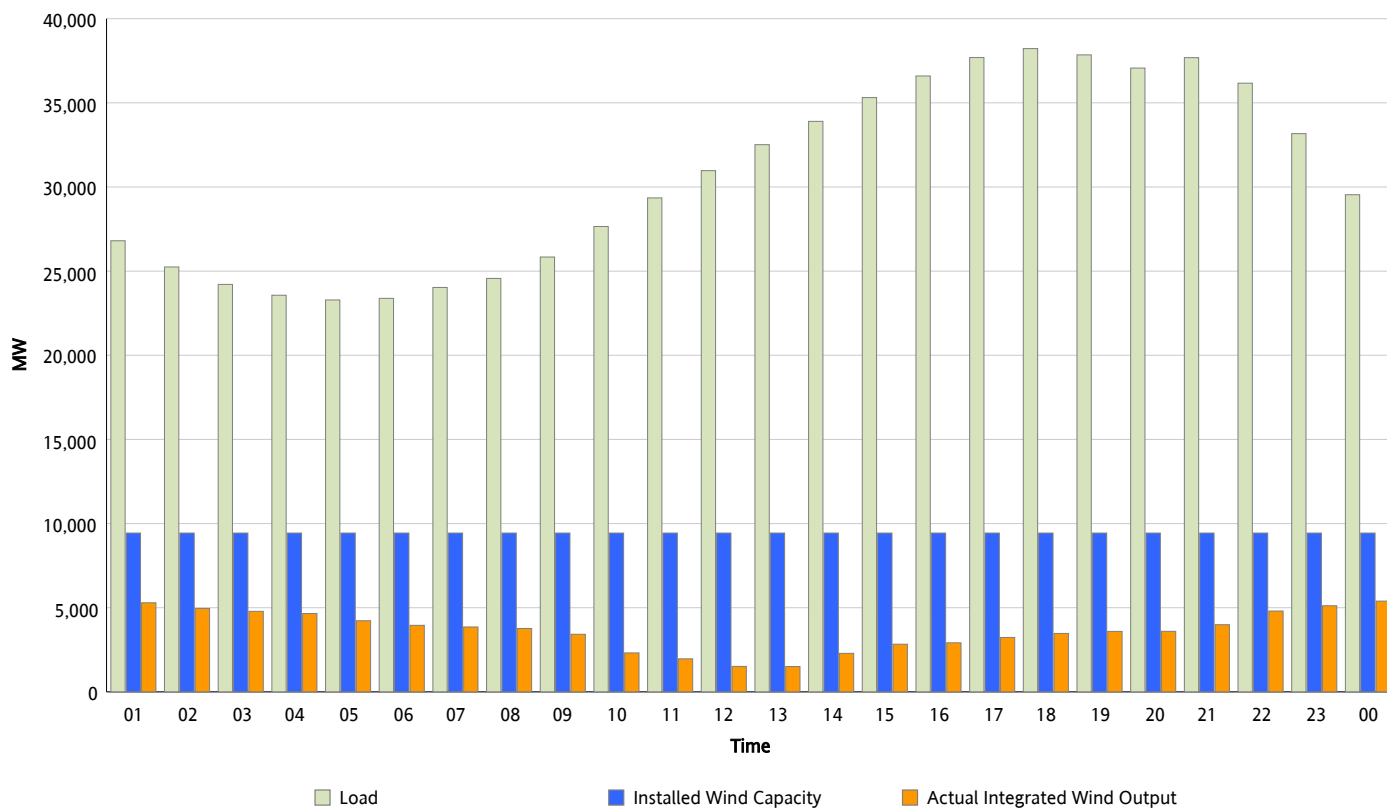


## ERCOT Grid Operations

### Wind Integration Report : 03/25/2012

Peak Load	38,224 MW
Load Peak Hour (HE)	18
Wind Over Peak	3,472 MW
Wind Record 03/18/12	7,917 MW
Max Wind Value*	5,684 MW
Wind Peak Time	00:04
Wind Integration %	20.5 %

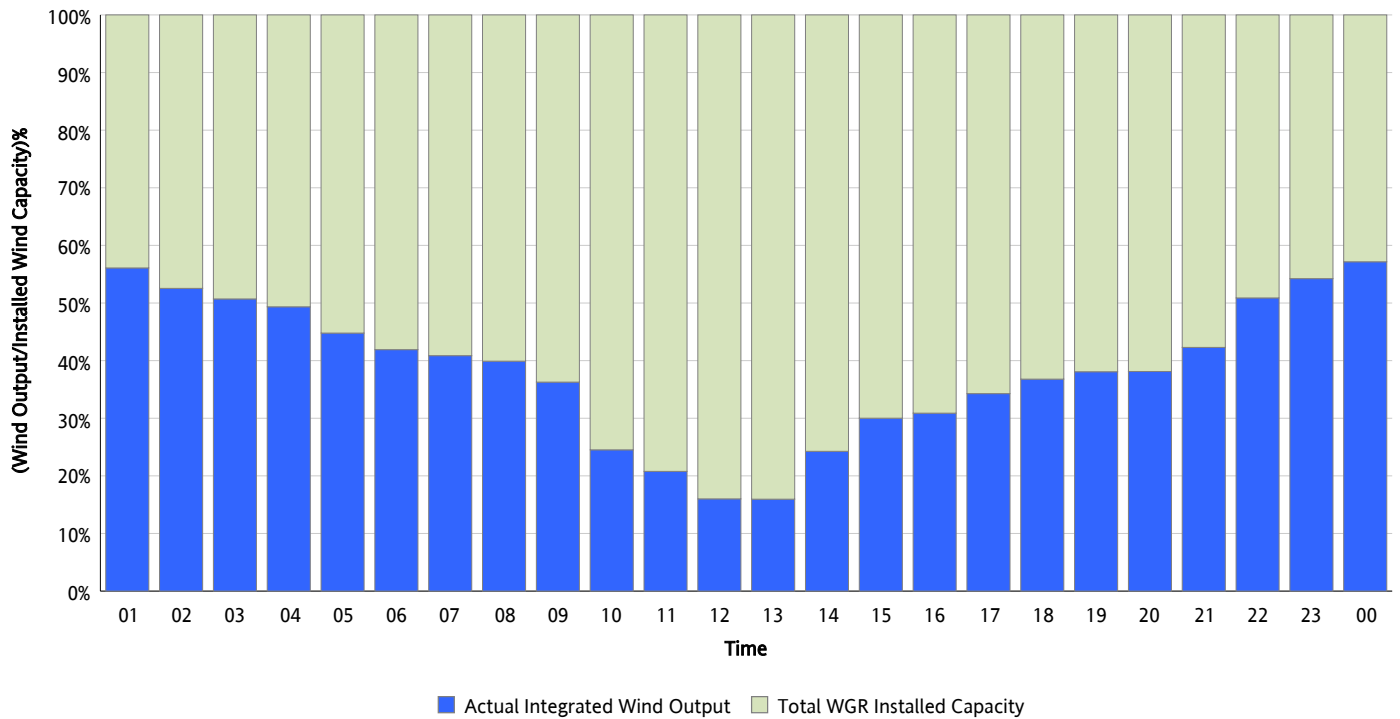
**Hourly Average Actual Load vs. Actual Wind Output**  
03/25/2012



\* Wind Record and Wind Max represent instantaneous values and the rest of the values are integrated over the hour

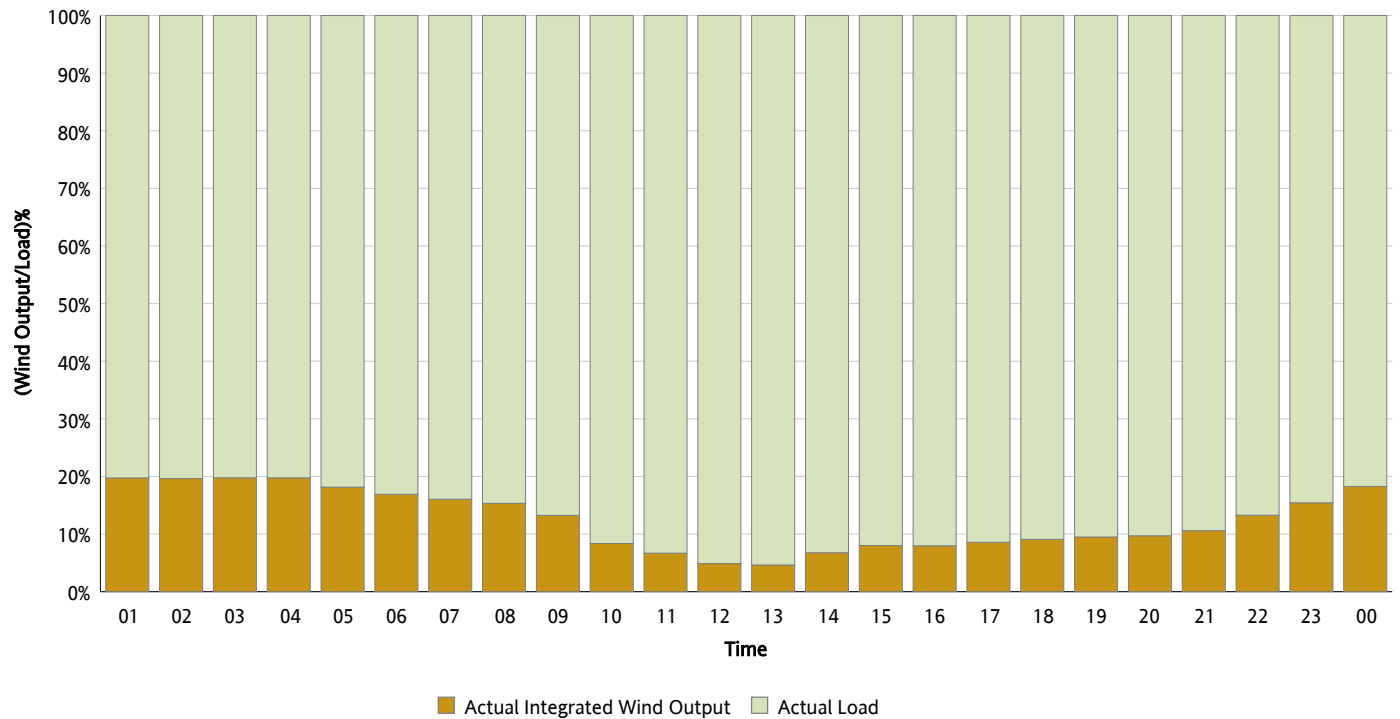
## Actual Wind Output as a Percentage of the Total Installed Wind Capacity

03/25/2012



## Actual Wind Output as a Percentage of the ERCOT Load

03/25/2012



## ERCOT Load vs. Actual Wind Output

03/18/2012 - 03/25/2012

